



Bartels AutoEngineer®

Version 5.4

Highlights

This document contains illustrated information about significant new features introduced with **Bartels AutoEngineer Version 5.4**.

Bartels AutoEngineer Version 5.4 Highlights

Published by: Bartels System GmbH, Erding

Last printing: November 2003

The information contained within the Bartels AutoEngineer publications as well as the products and/or programs described therein are subject to change without notice and should not be construed as a commitment by Bartels System.

Although Bartels System has gone to great effort to verify the integrity of the information provided with the Bartels AutoEngineer publications, these publications could contain technical inaccuracies or typographical errors. Bartels System shall not be liable for errors contained therein or for incidental consequential damages in connection with the furnishing, performance, or use of this material. Bartels System appreciates readers' and/or users' comments in order to improve these publications and/or the products described therein. Changes are periodically made to the information therein. These changes will be incorporated in new editions of the Bartels AutoEngineer publications.

All rights reserved. No part of the Bartels AutoEngineer publications may be reproduced, stored in a retrieval system, translated, transcribed, or transmitted, in any form or by any means manual, electric, electronic, electromagnetic, mechanical, chemical, optical, or otherwise without prior express written permission from Bartels System.

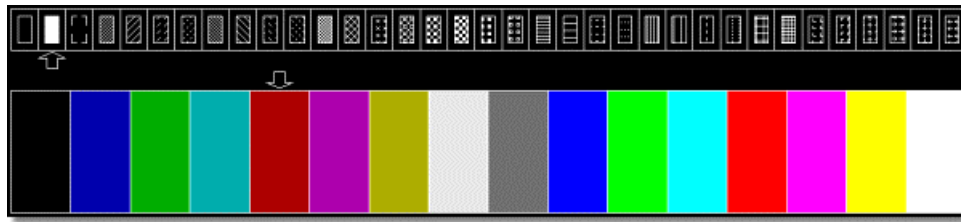
Bartels AutoEngineer®, Bartels Router®, and Bartels Autorouter® are registered trademarks of Bartels System. Bartels User Language™ and Bartels Neural Router™ are trademarks of Bartels System. All other products or services mentioned in this publication are identified by the trademarks or service marks of their respective companies or organizations.

Copyright © 1986-2003 by Oliver Bartels F+E
All Rights Reserved
Printed in Germany

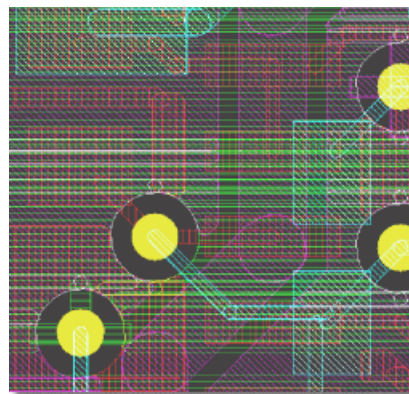
Contents

Layout Display Pattern Settings.....	5
Library Element Selection Dialogs	6
Dialog for selecting Layout Parts and Part Sets for Placement.....	6
Dialogs for increased usability	7
SCM Text Classes for Visibility Control.....	7
Copper Fill Cutouts on Alternative Layers.....	8
BAE HighEnd: Minimum Distance Check between Net Groups.....	8

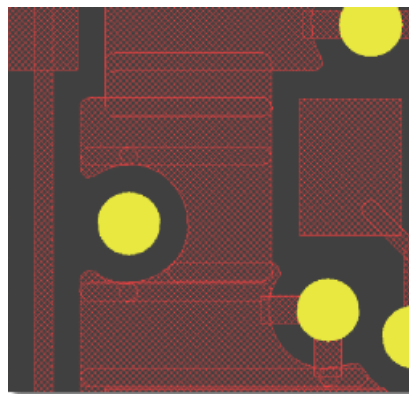
Layout Display Pattern Settings



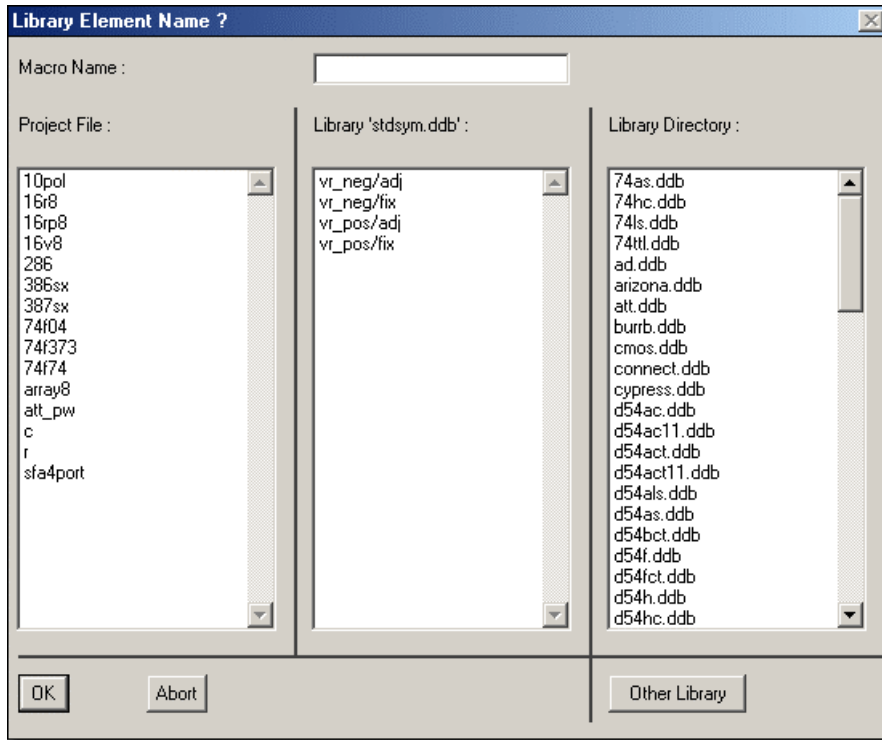
Increased Multilayer Visibility



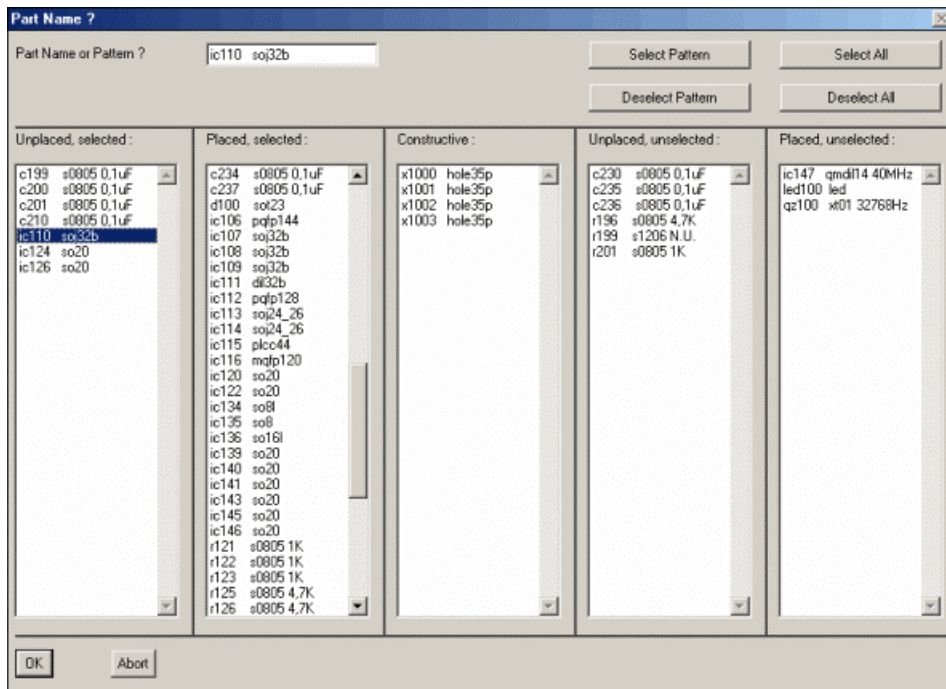
Overlapping Fill Area Outlines visible



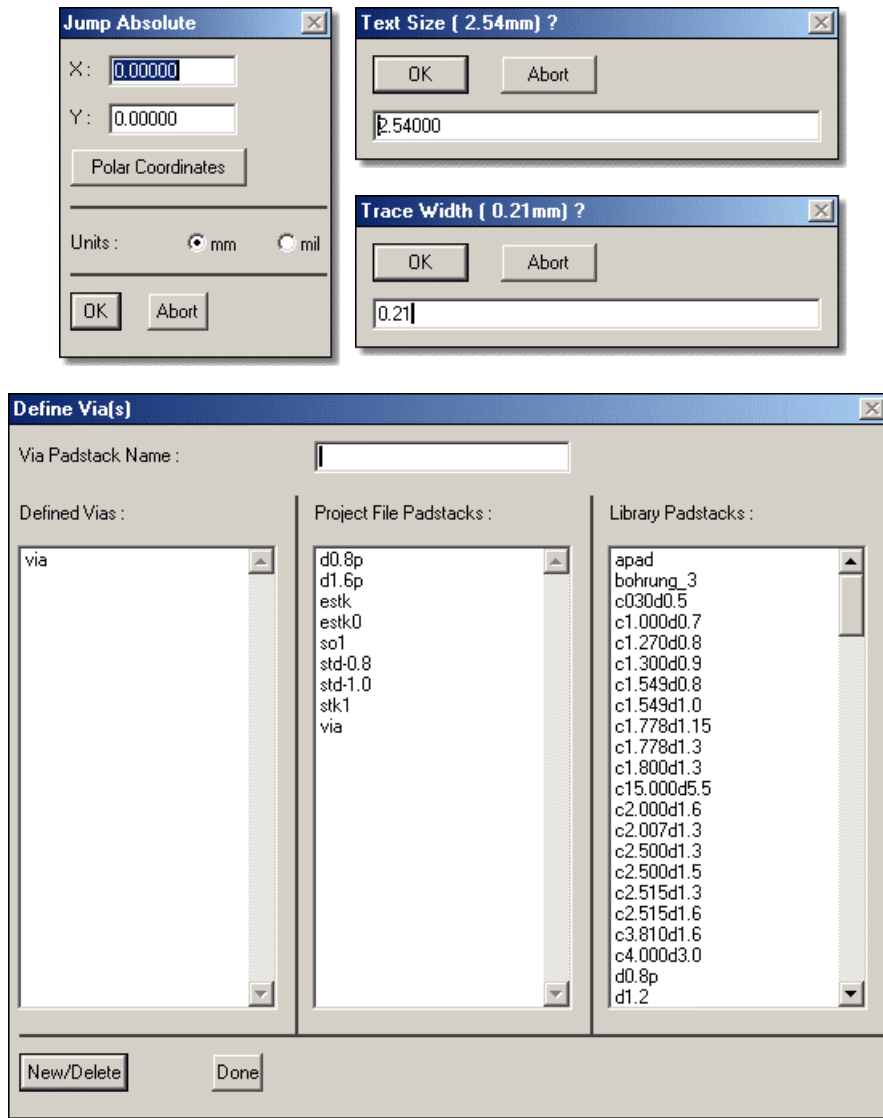
Library Element Selection Dialogs



Dialog for selecting Layout Parts and Part Sets for Placement



Dialogs for increased usability

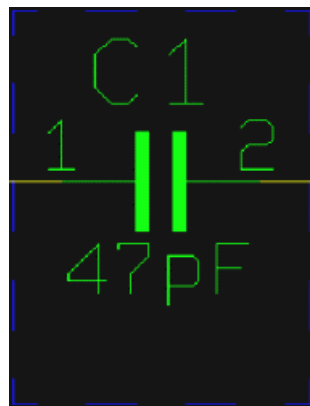


SCM Text Classes for Visibility Control

only Values visible

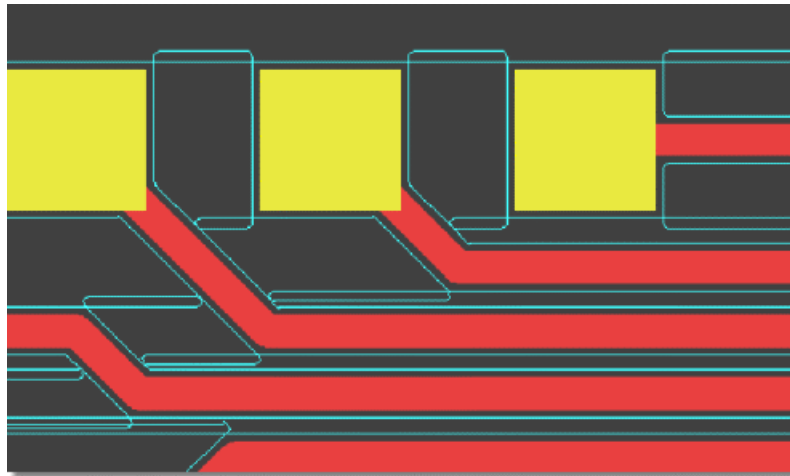
Values and Pin Names visible

only Pin Names visible

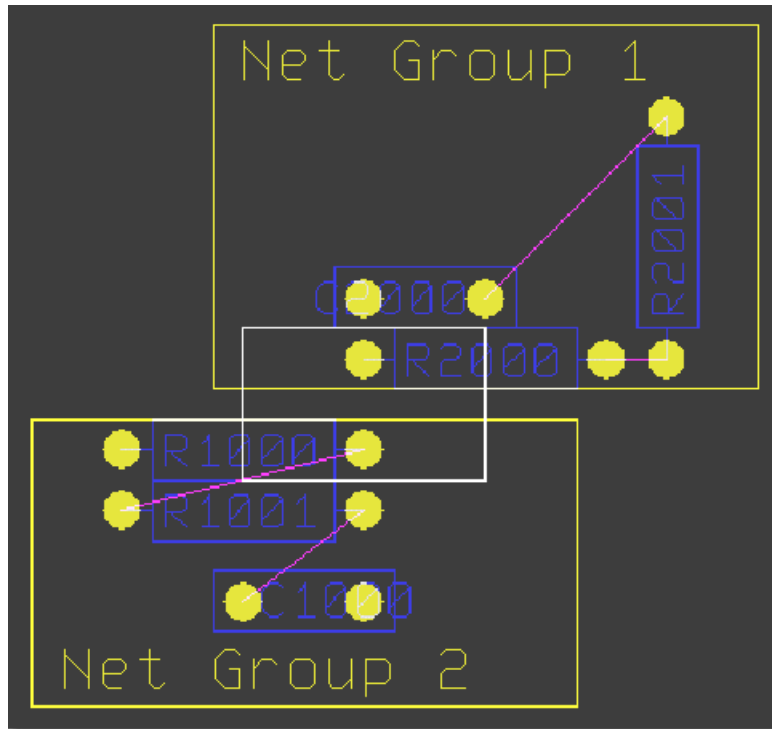


Copper Fill Cutouts on Alternative Layers

e.g., for Milling Contour Generation



BAE HighEnd: Minimum Distance Check between Net Groups



Please see the [Bartels AutoEngineer® Version 5.4 Release Notes](#) for a detailed description of all new **BAE Version 5.4** features.